



DAYMORRIS
ESTATE AGENTS
EXPERIENCE THE DIFFERENCE

Day Morris Estate Agents
2 Fleet Road, Hampstead, London, NW3 2QS
Tel: 020 7482 4282
Email: sales@daymorris.co.uk
www.daymorris.co.uk



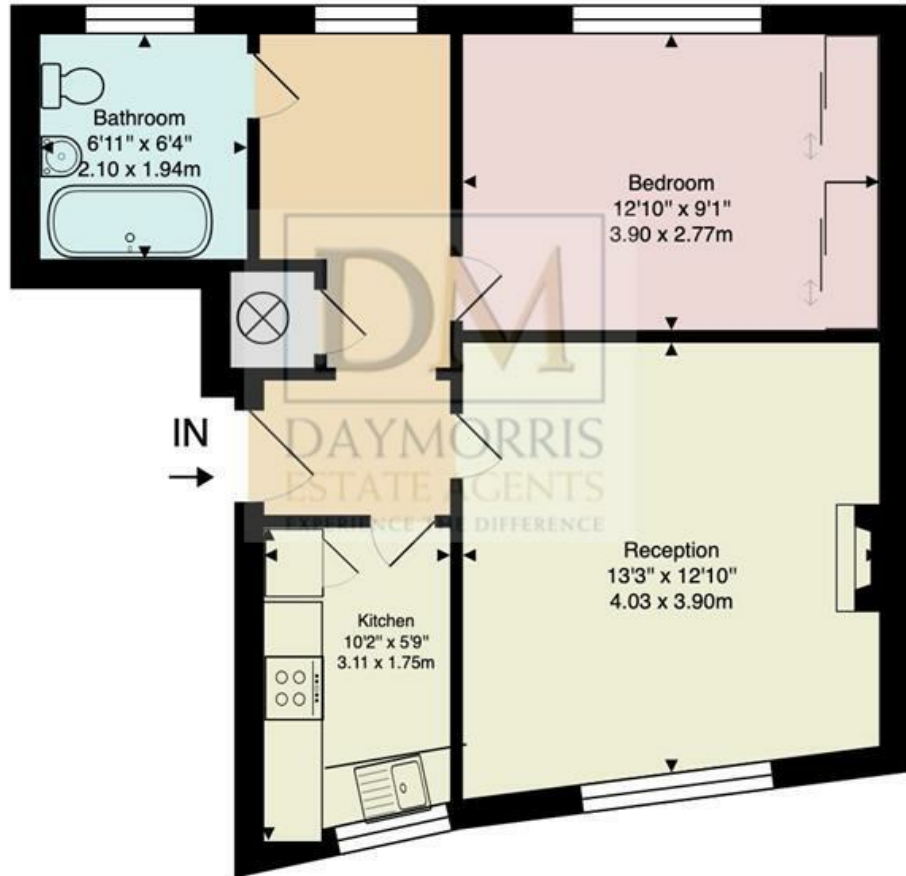
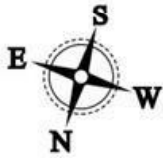
Dartmouth Park Hill, London, NW5 1HR

£449,950

An attractive one double bedroom ground floor flat in an ideal position, on the cusp of Dartmouth Park and Tufnell Park. The apartment offers spacious and bright rooms throughout, with a good sized reception, separate kitchen and a small study room. Hampstead Heath is within easy walking distance, along with Tufnell Park station for the Northern Line.



Somerset House NW5



Ground Floor

Approx. Gross Internal Area: 489 ft² ... 45.5 m²

All measurements and areas are approximate only.
Dimensions are not to scale. This plan is for guidance only and must not be relied upon as a statement of fact.

Energy Efficiency Rating		Current	Potential
Very energy efficient - lower running costs			
(92 plus) A			
(81-91) B			
(69-80) C			
(55-68) D			
(39-54) E			
(21-38) F			
(1-20) G			
Not energy efficient - higher running costs			
		57	76
England & Wales		EU Directive 2002/91/EC	

Environmental Impact (CO ₂) Rating		Current	Potential
Very environmentally friendly - lower CO ₂ emissions			
(92 plus) A			
(81-91) B			
(69-80) C			
(55-68) D			
(39-54) E			
(21-38) F			
(1-20) G			
Not environmentally friendly - higher CO ₂ emissions			
England & Wales		EU Directive 2002/91/EC	